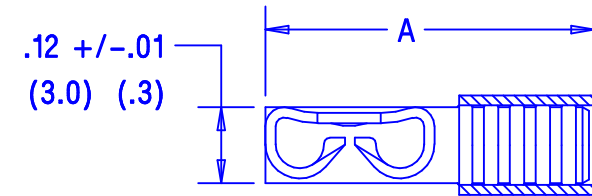


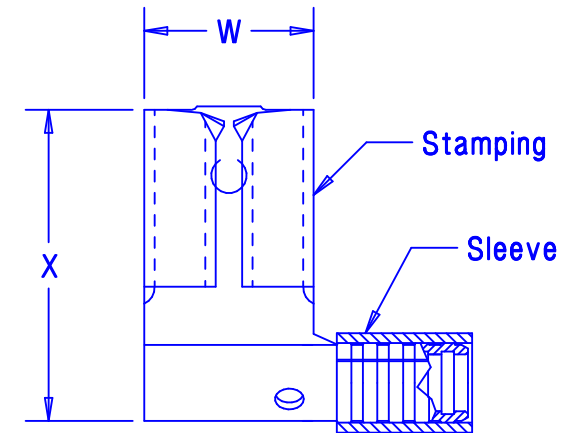
| Part number |          | Tab size                   | Wire range AWG | Dimensions (inches) |                                    |                    |
|-------------|----------|----------------------------|----------------|---------------------|------------------------------------|--------------------|
| Prefix      | PK       |                            |                | X <sup>+/-02</sup>  | W <sup>+/-01</sup> <sub>(.5)</sub> | A <sup>+/-03</sup> |
| DR18-250    | -C<br>-M | .250 X .032<br>(6.3 X 0.8) | 22-18          | .54<br>(13.7)       | .30<br>(7.6)                       | .57<br>(14.5)      |
| * DR14-250  | -C<br>-M | .250 X .032<br>(6.3 X 0.8) | 16-14          | .55<br>(14.0)       | .30<br>(7.6)                       | .57<br>(14.5)      |
| DR10-250    | -L<br>-D | .250 X .032<br>(6.3 X 0.8) | 12-10          | .57<br>(14.5)       | .30<br>(7.6)                       | .61<br>(15.5)      |

(.8)



Notes:

- Used for:
  - A. 302° F (150° C) maximum temperature rating
  - B. Stranded copper wire only
  - C. 10A. max (DR14-250 only)
- Material:
  - A. Stamping: .018" (0.46) thick tin plated brass
  - B. Sleeve : Tin plated brass
- Package quantity:
  - A. Standard: -C = 100, -L = 50
  - B. Bulk : -M = 1000, -D = 500
- First insertion force: 12 Lb (53 N) maximum  
 First withdrawal force: 12 Lb (53 N) maximum  
 6 Lb (27 N) minimum
- Dimensions in brackets are in millimeters or mm<sup>2</sup>
- Installation tools: (UL listed, UL recognized & CSA certified)
  - A. DR18-250 & DR14-250: CT-100, CT-200, CT-570, CT-1570
  - B. DR10-250: CT-570, CT-1570, CT-100, CT-200
  - C. PANDUIT APPROVED INSTALLATION TOOLS: CT-160, CT-260, CT-1701 (DR10-250 ONLY).
- Wire Strip Length: 9/32 <sup>+1/32</sup><sub>-0</sub> (7.1 <sup>+8</sup><sub>-0</sub>)



LISTED  
20H3  
E78522



CERTIFIED  
LR31212



RECOGNIZED  
E78522

A41331\_08

|     |      |      |     |                              |       |      |     |     |
|-----|------|------|-----|------------------------------|-------|------|-----|-----|
| 08  | 4/04 | JHNU |     | REVISED NOTE #6              |       |      |     |     |
| 07  | 1/01 | RM   | SKB | FILESPEC WAS N41331AA_PCD_06 | 8925  | JAC  | CCH |     |
| 06  | 3/99 | JKD  |     | ADDED CT-1570 TOOL           | 07632 |      |     |     |
| 5   | 9-94 | MS   | RLS | Update Dimensions            | 02494 | LCA  | DBH |     |
| REV | DATE | BY   | CHK | DESCRIPTION                  | ECN   | CUST | PM  | APP |



CORP.

TINLEY PARK, ILLINOIS

Non-insulated, sleeved right angle female disconnect, .250 series

|          |       |       |             |
|----------|-------|-------|-------------|
| DRAWN BY | CHK'D | SCALE | DRAWING NO. |
| DAW      |       | None  | A41331      |